

Collins Pennsylvania Forest

Collins Pine Co. / Kane Hardwood
Division

Ned Karger-Silvicultural Manager

Collins Pine Co. History

- Founded 1855 in Forest Co. PA
- PA operations thru 1917
- Began operations in WA, OR, CA
- Held onto 26,000 acres in PA
- Returned after WWII, began purchasing land
- Sawmill 1974, D mill 1985, major upgrades



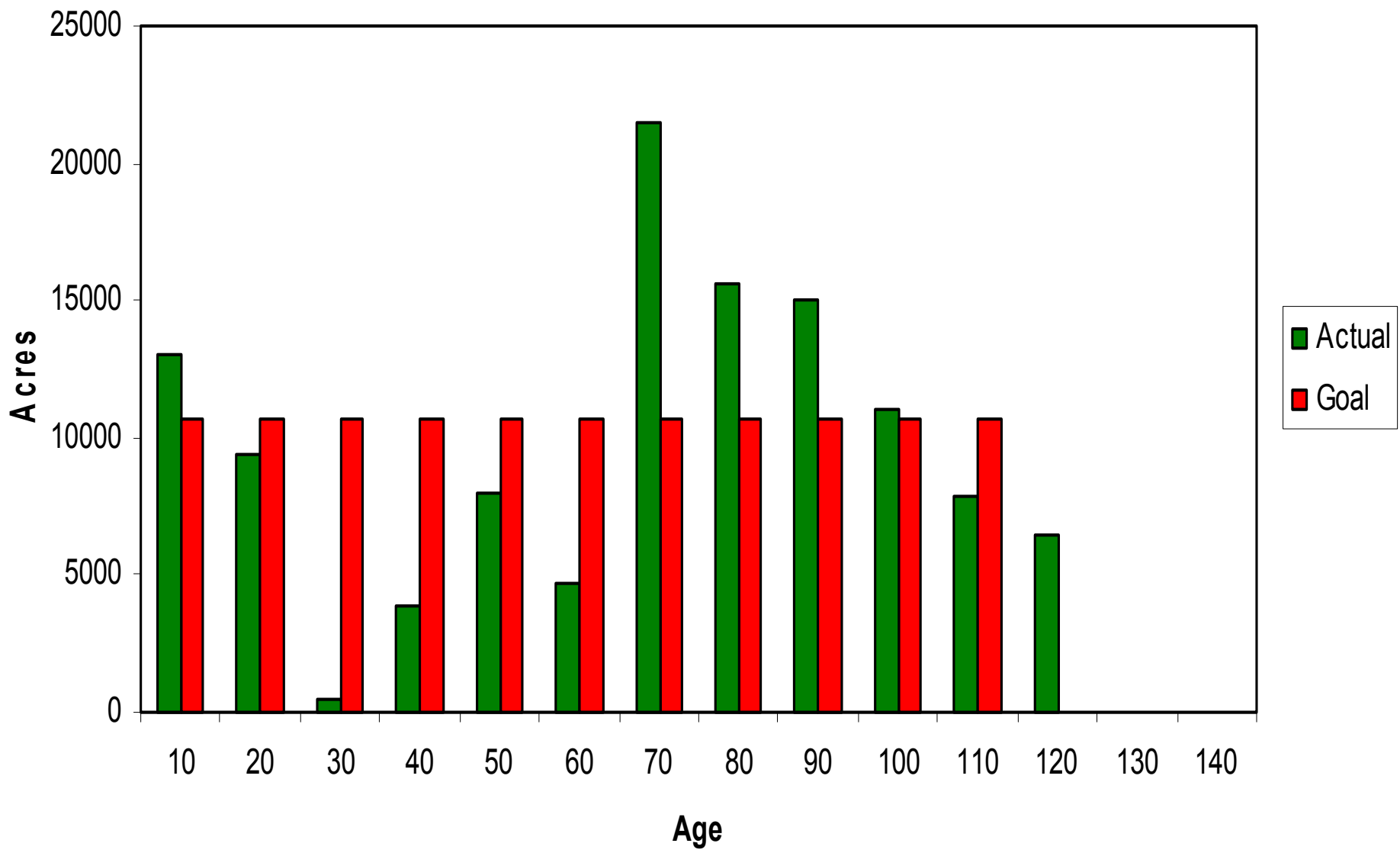
Collins PA Forest

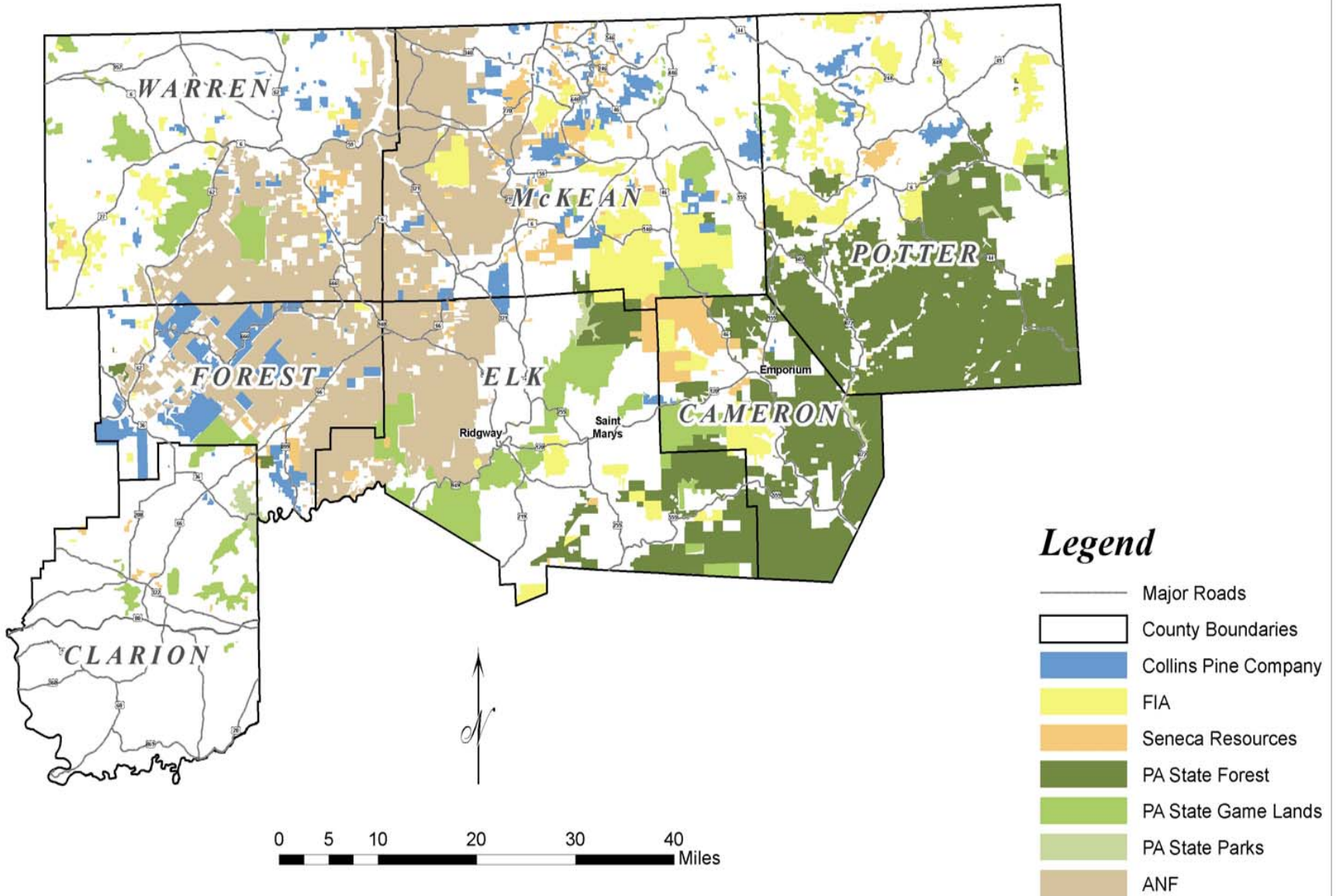
- 126,000 acres (189 parcels)
- FSC certified since 1994
- AAH supplies 70% of mill needs
- Parcel size 15 to 13,000 acres
- N. Hardwoods/Allegheny Hardwoods/N. Oak
- Various harvesting histories
- Various forest health conditions
- Most stands 90+ years old

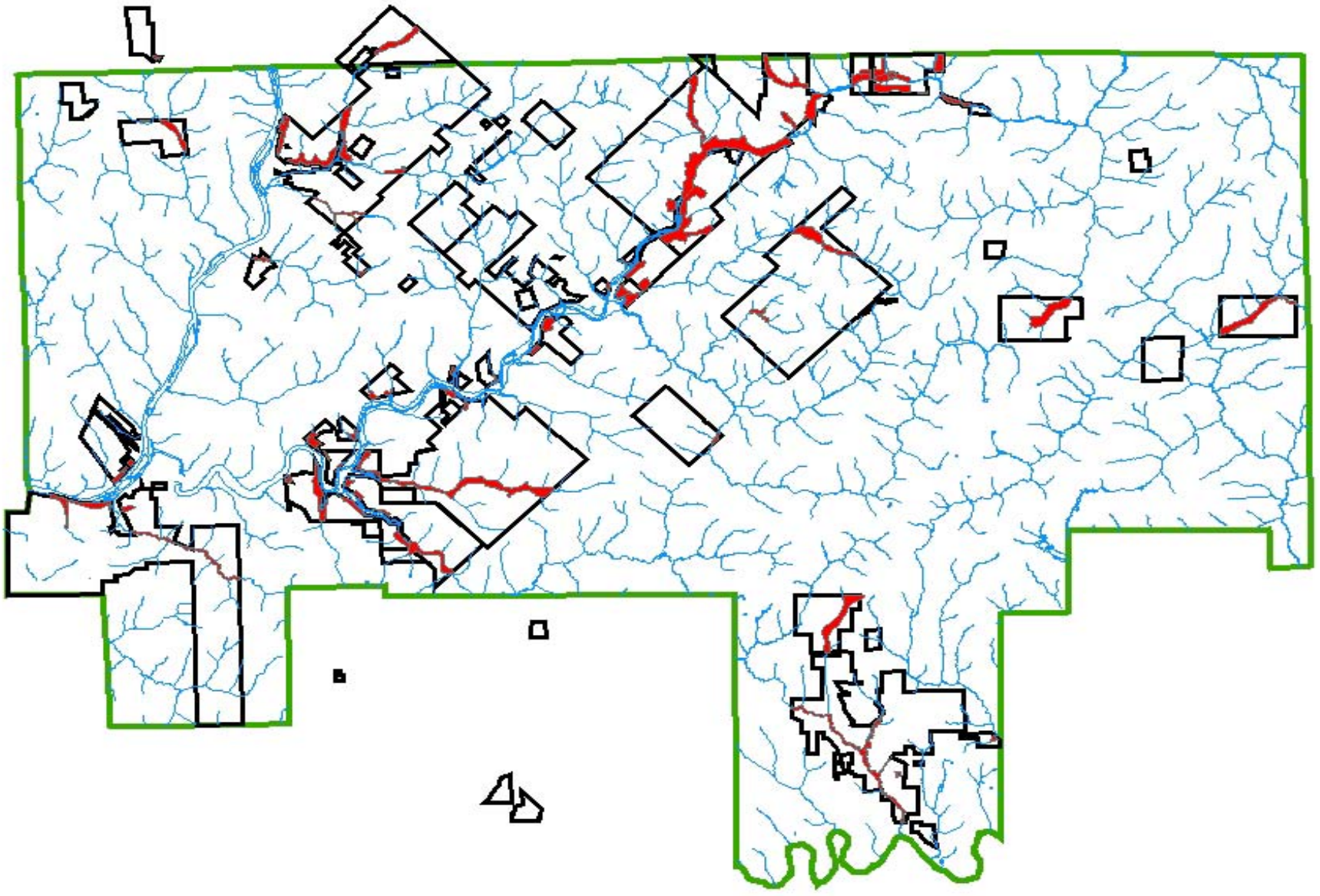
CPF Goal=Balanced Age Class

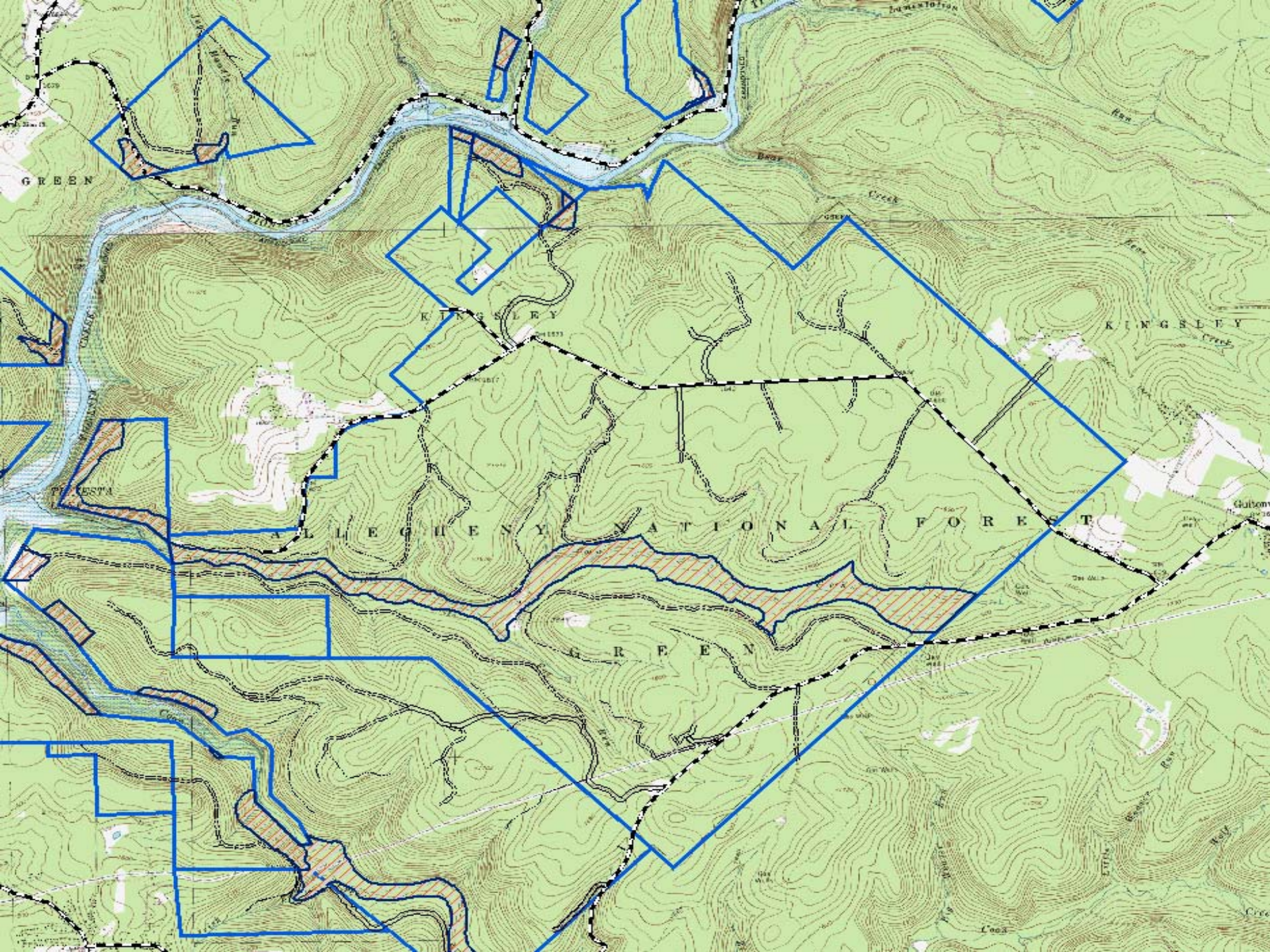
- Extend rotation age on healthiest stands/sites
- Regenerate stands in poor health
- Harvest Priority Assessment
- Health/Age/UGS/Size/Threat to Seed Source
- Silviculture-Modified Even Age/Two Age
 - Regeneration focused
 - Shelterwood sequence

Initial Age Class Structure



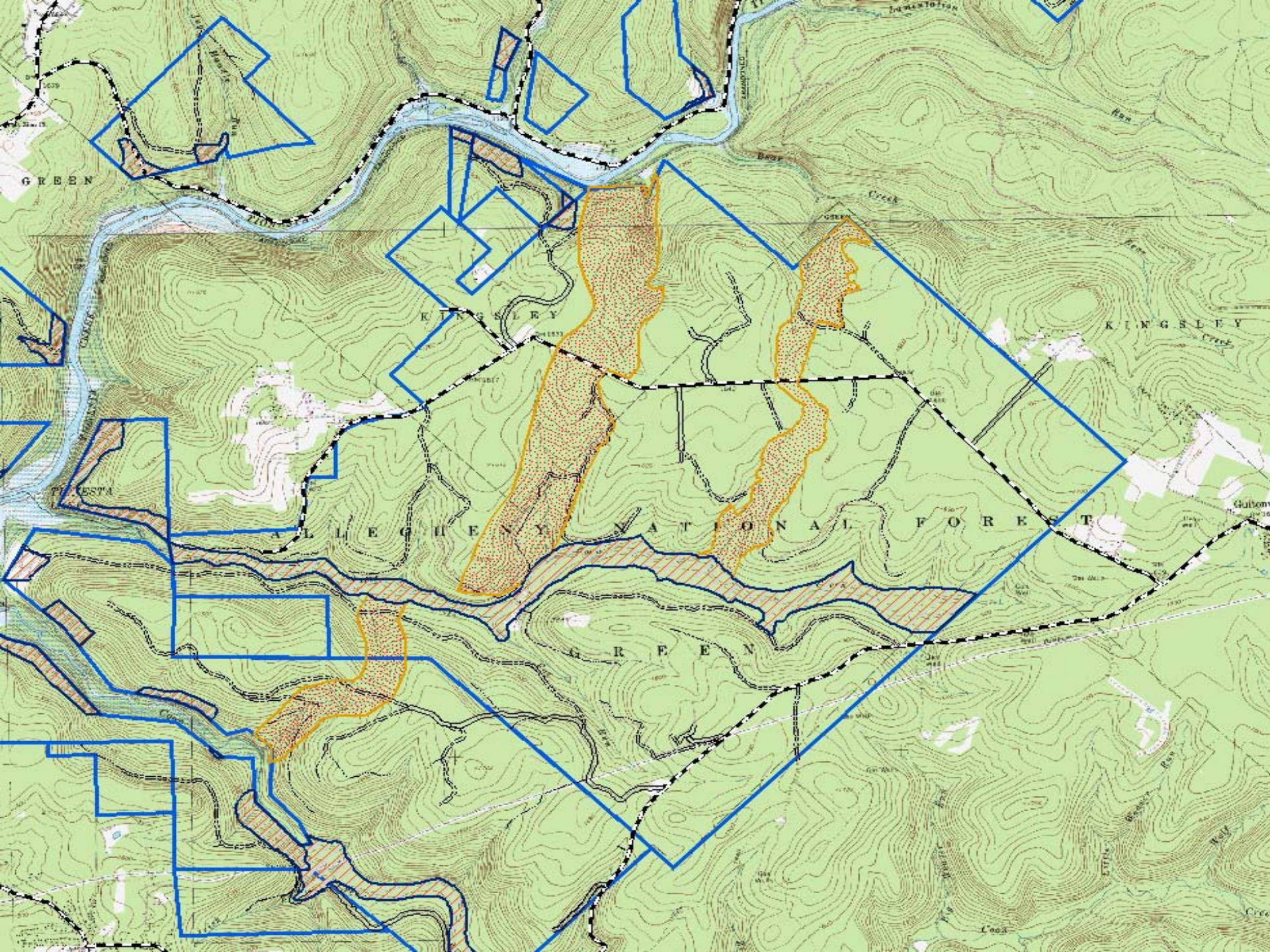






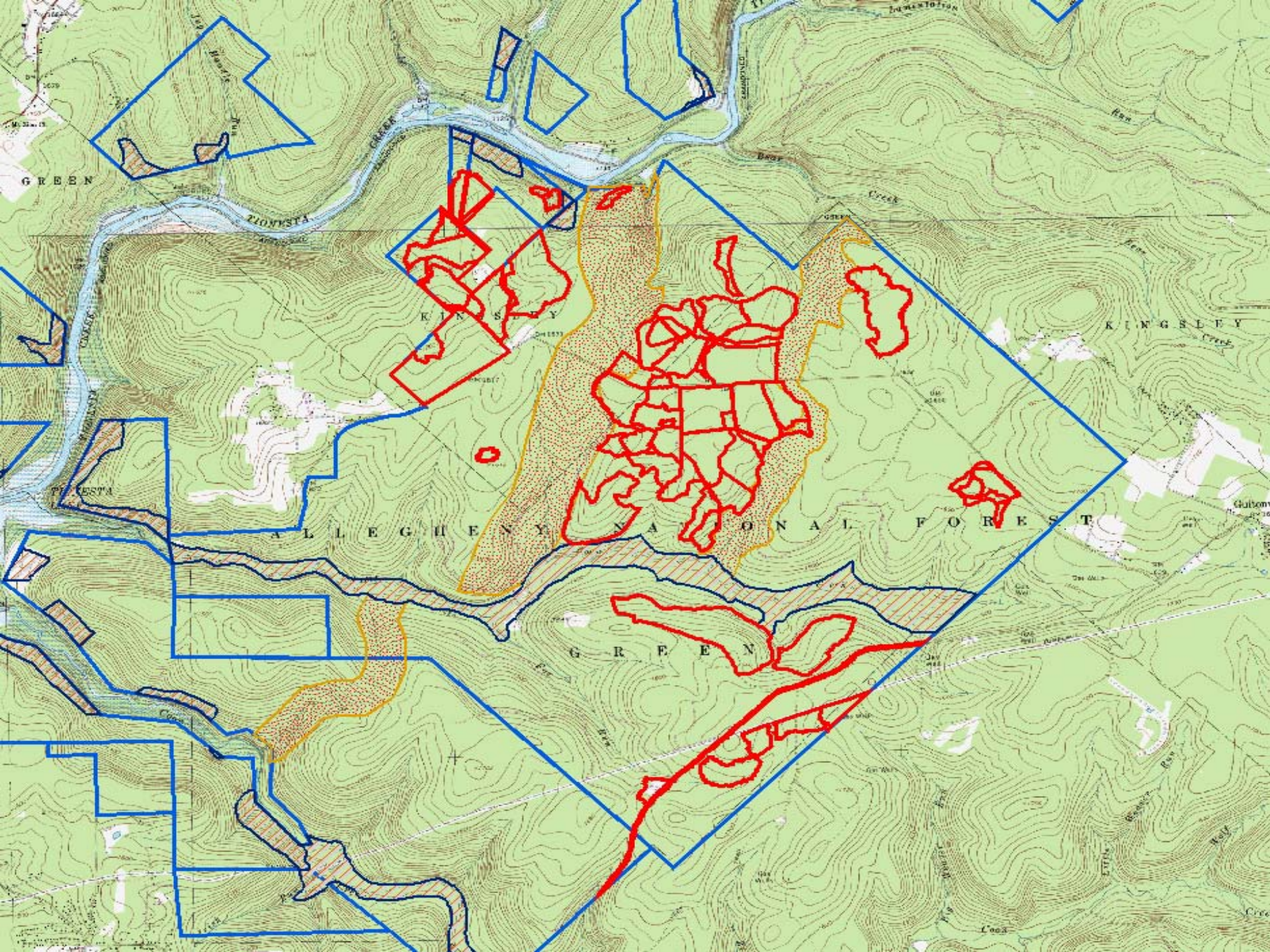
CPF Permanent Reserves

- Unique Natural Communities (PNHP)
- Riparian Zones-300' Buffer (44 miles)
- Sensitive sites-Wetlands
- Unique cultural, natural, geologic sites
- Steep slopes
- No timber mgmt, incl. most salvage



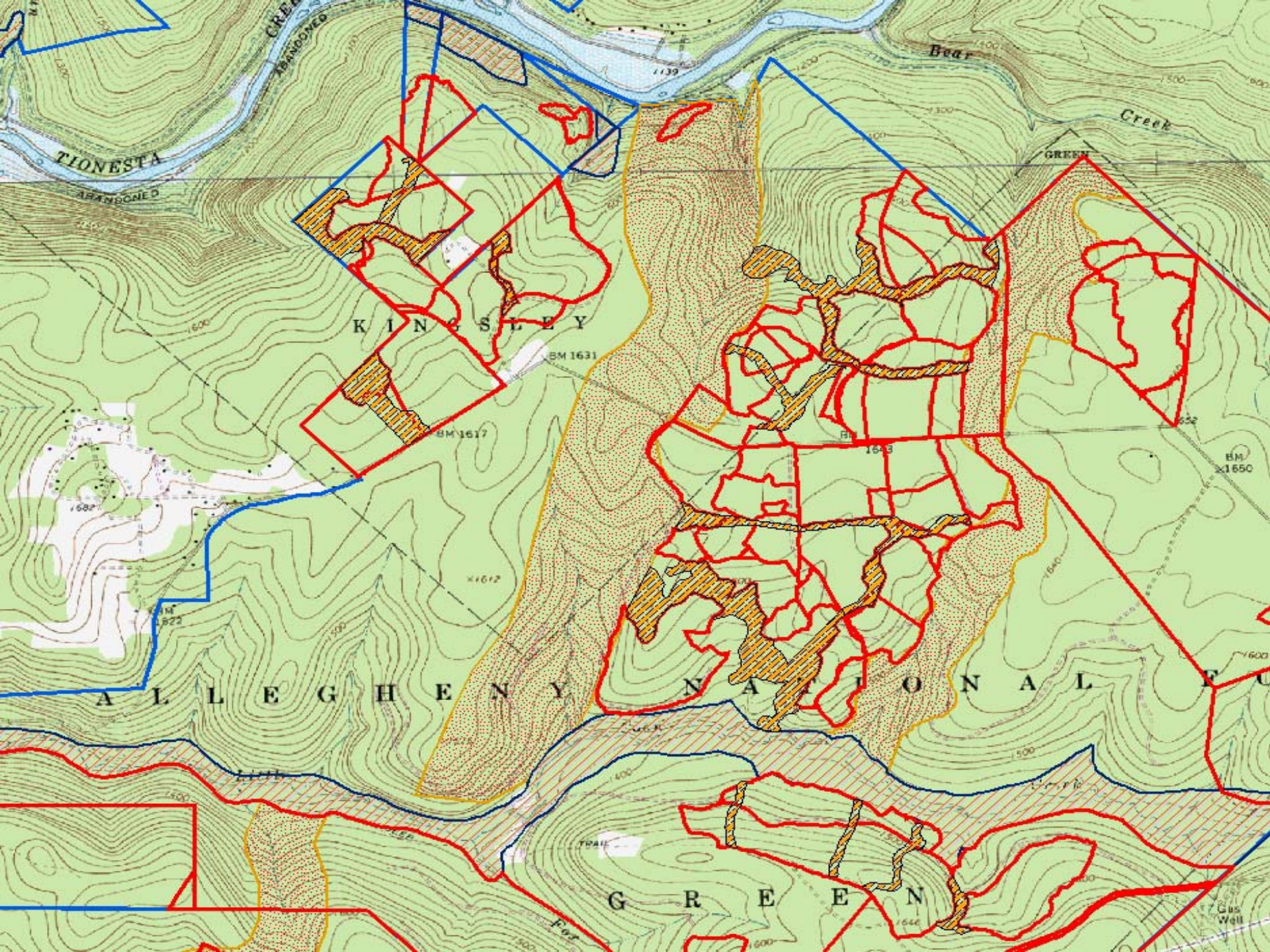
CPF Rotational Reserves

- Purpose: Maintain connectivity between mature forest blocks (15-20% of CPF)
- On all parcels >1000 acres
- Minimum 1000' width wherever possible
- Limited Harvesting (salvage) while adjacent compartments are regenerated
- Could be fully managed only after adjacent compartments provide ecological features
- 50+years depending on residual stands



CPF Harvest Blocks

- Shelterwood / Regeneration Sequence
- Blocks consolidated within compartments
- Mitigate deer impact
- Reduces need for fencing/herbicide
- Maximum block size 75 acres
- Adjacent blocks require travel lanes



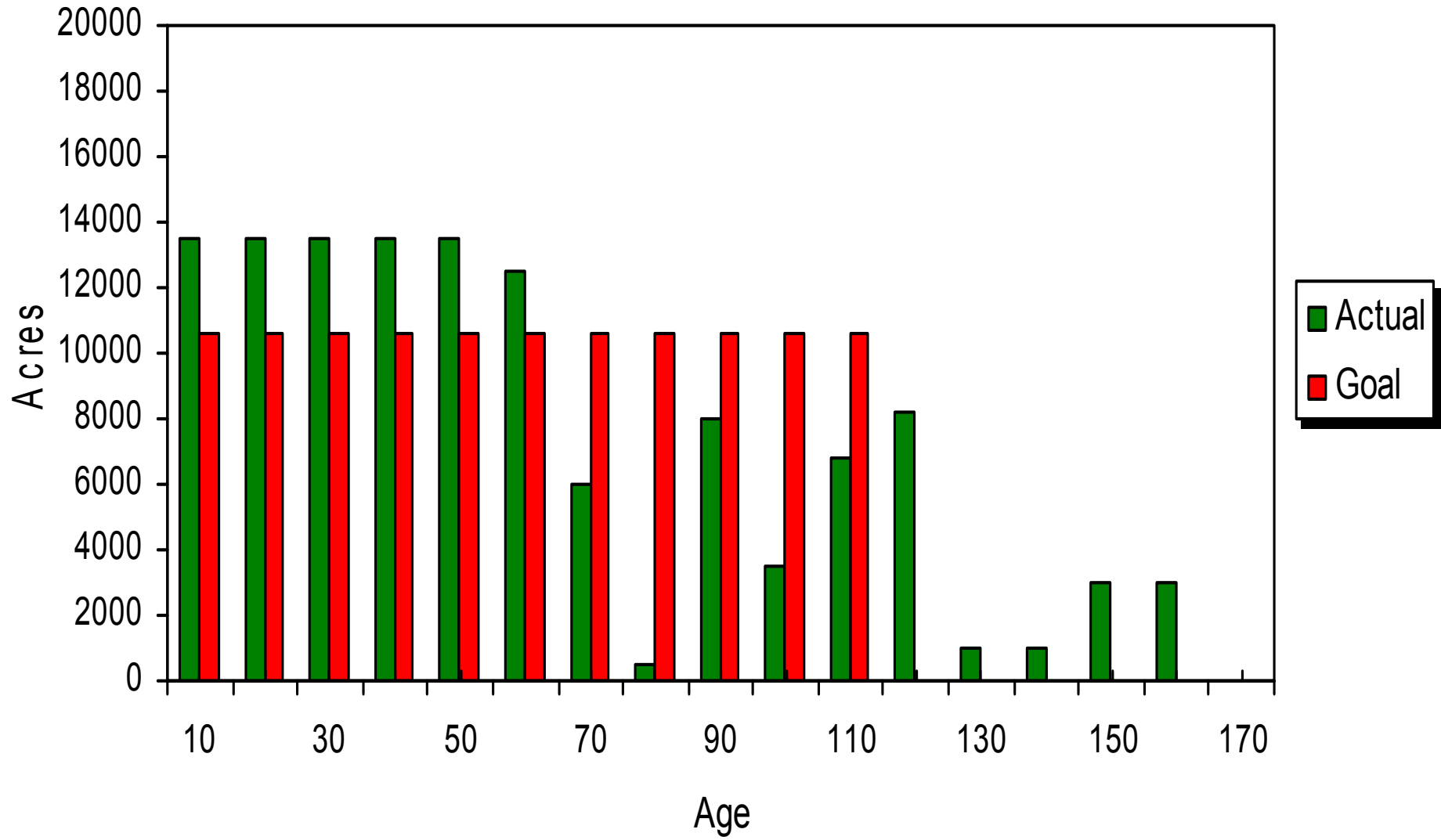
CPF Travel Lanes

- Break up individual harvest block pattern within large regeneration compartments
- Facilitate movement of wildlife
- Facilitate movement of people
- Minimum 100' width-50% canopy retention
- Incorporate natural features, seeps, springs, cavity trees, conifer patches, mast producers, less common species, etc.

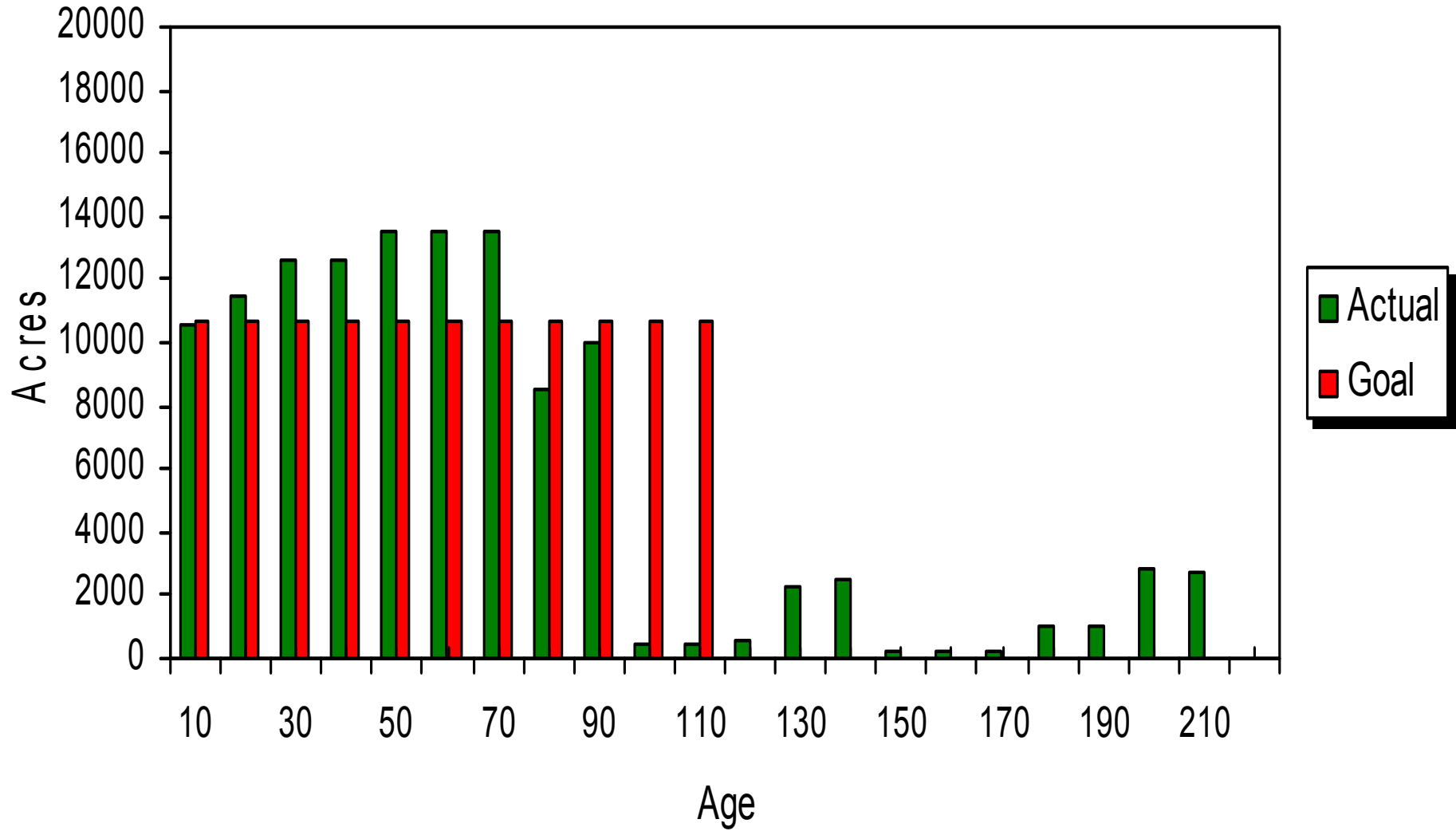
In-stand retentions

- 10-25 sq. ft. BA
- Cavity trees / Snags
- Less Common Species
- Conifers
- Good quality large pole / small sawlog size
- Distribution could be
 - Evenly distributed
 - Clumps
 - Islands
 - Protect habitat features

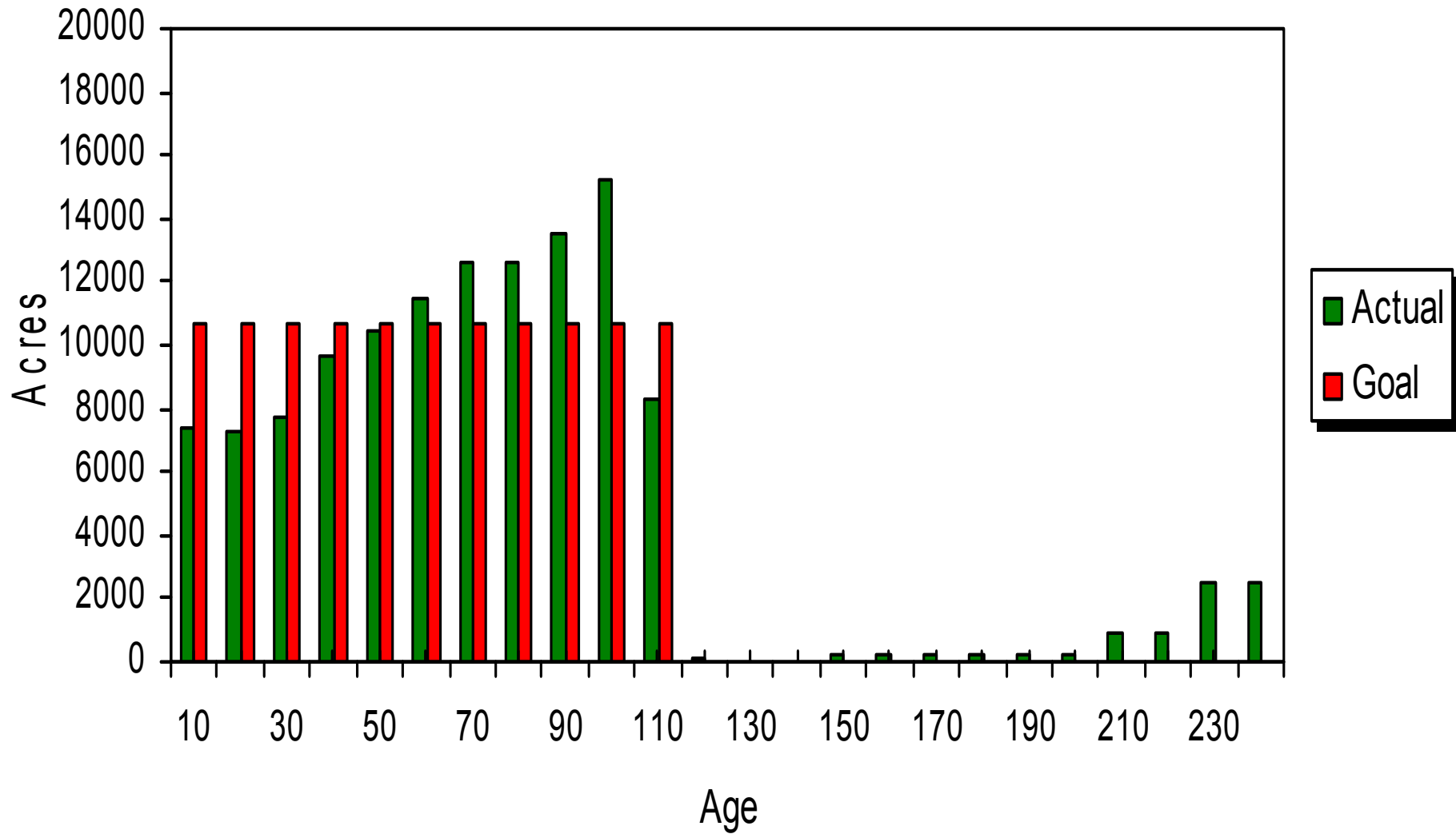
After 40 Years



After 80 Years



After 120 Years





Dependent on the Past
Responsible for the Future